

② 路 - 1

HPPE \$50.

④  $L = 86.02 \text{ m}$

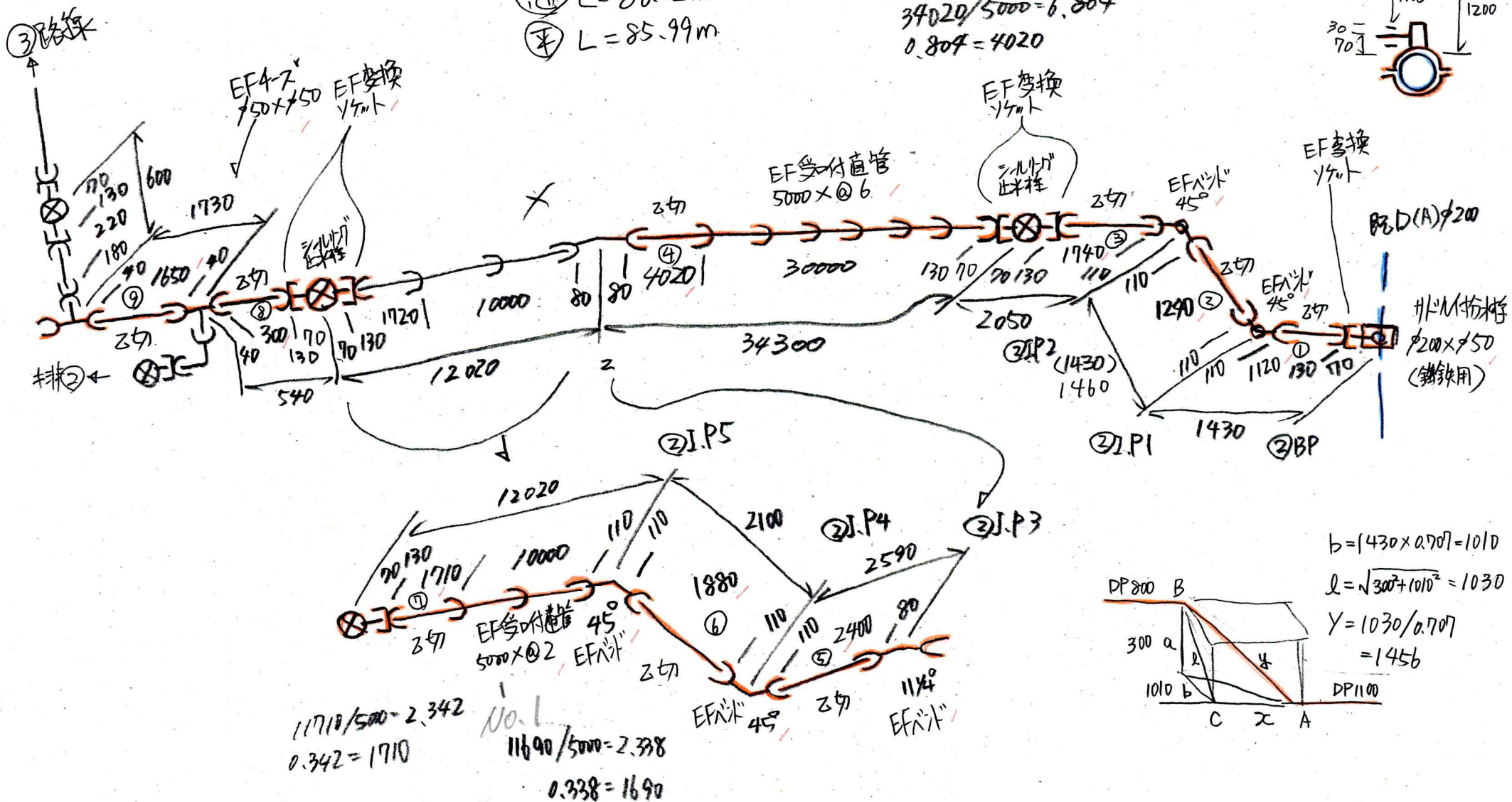
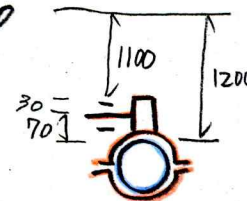
⑦  $L = 85.99 \text{ m}$

$$33990 / 5000 = 6.798$$

$$0.798 = 3990$$

$$34020/5000 = 6.804$$

$$0.804 = 4020$$

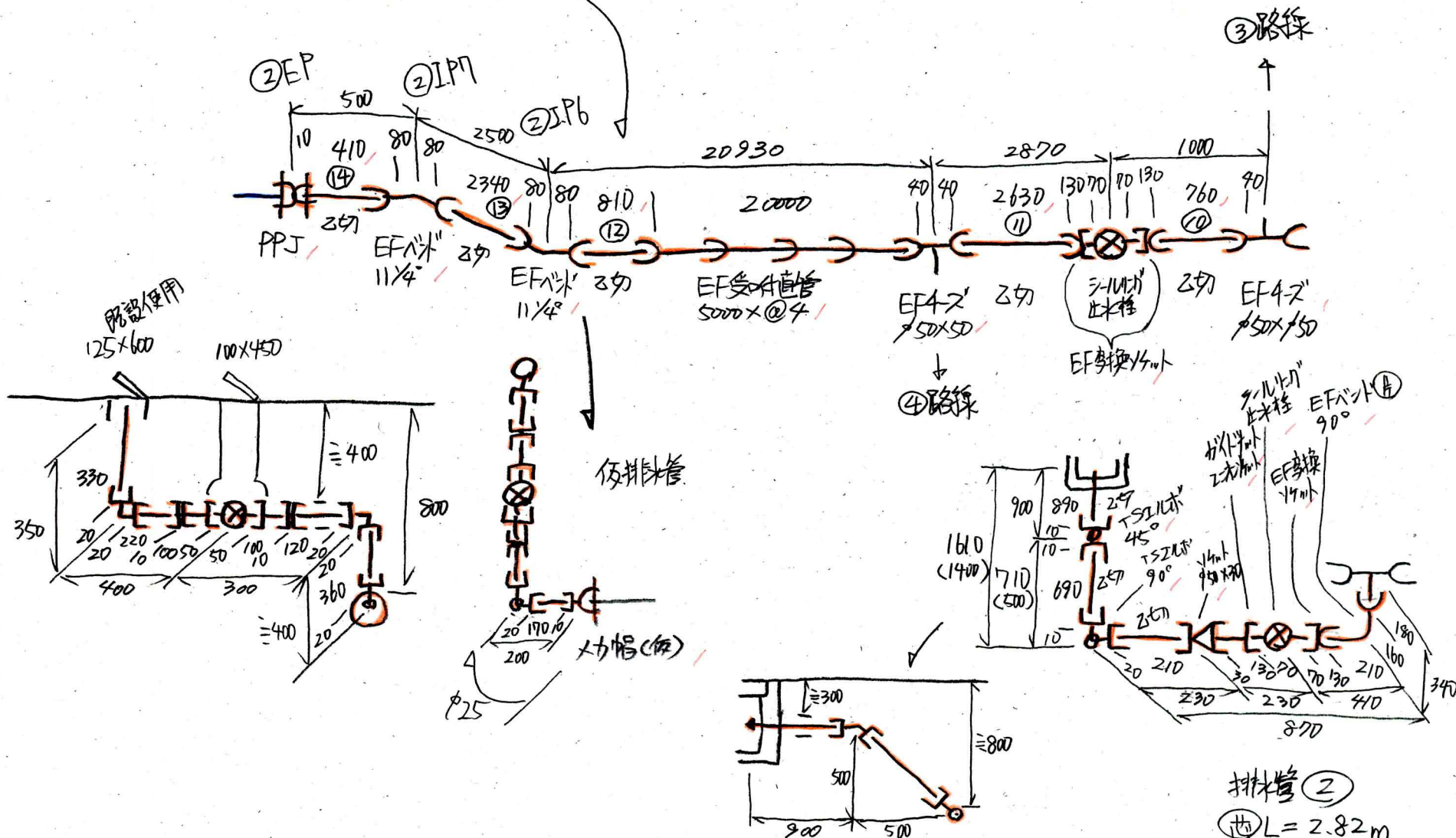


※接続時 どちらか圧着止水  
傷に補修ハット  
設置

②路線-2

$$20810/5000 = 4.162$$

$$0.162 = 810$$



排水管 ②

$$\text{②} L = 2.82 \text{ m}$$

$$\text{③} L = 2.61 \text{ m}$$